



142 Wheelwrights Road Riddells Creek VIC

5 3 13

Expressions Of Interest

First time offered for sale is this lovingly built and maintained Quaker Barn Style Home with a separate Granny Flat/Studio & Outbuildings with a beautiful natural ornamental lake. Set amongst the gum trees, wildlife and fauna and flora you can't help but fall in love with the ambiance, lifestyle benefits and living space available.

Just minutes from Riddells Creek township, its perfectly positioned to give you forever views and ultimate privacy without being remote. Indulge yourself in your family life, work & hobbies within this residence and its 52 acre groundsuse your imagination as the possibilities for your family and future are endless.

There are multiple undercover options for your vehicles including garaging, shedding and carports along with ample

Land Size : 52 Acres

View : <https://www.davidpinorealestate.com.au/sale/vic/macedon-ranges/riddells-creek/residential/house/6598881>



David Pino
0344101799

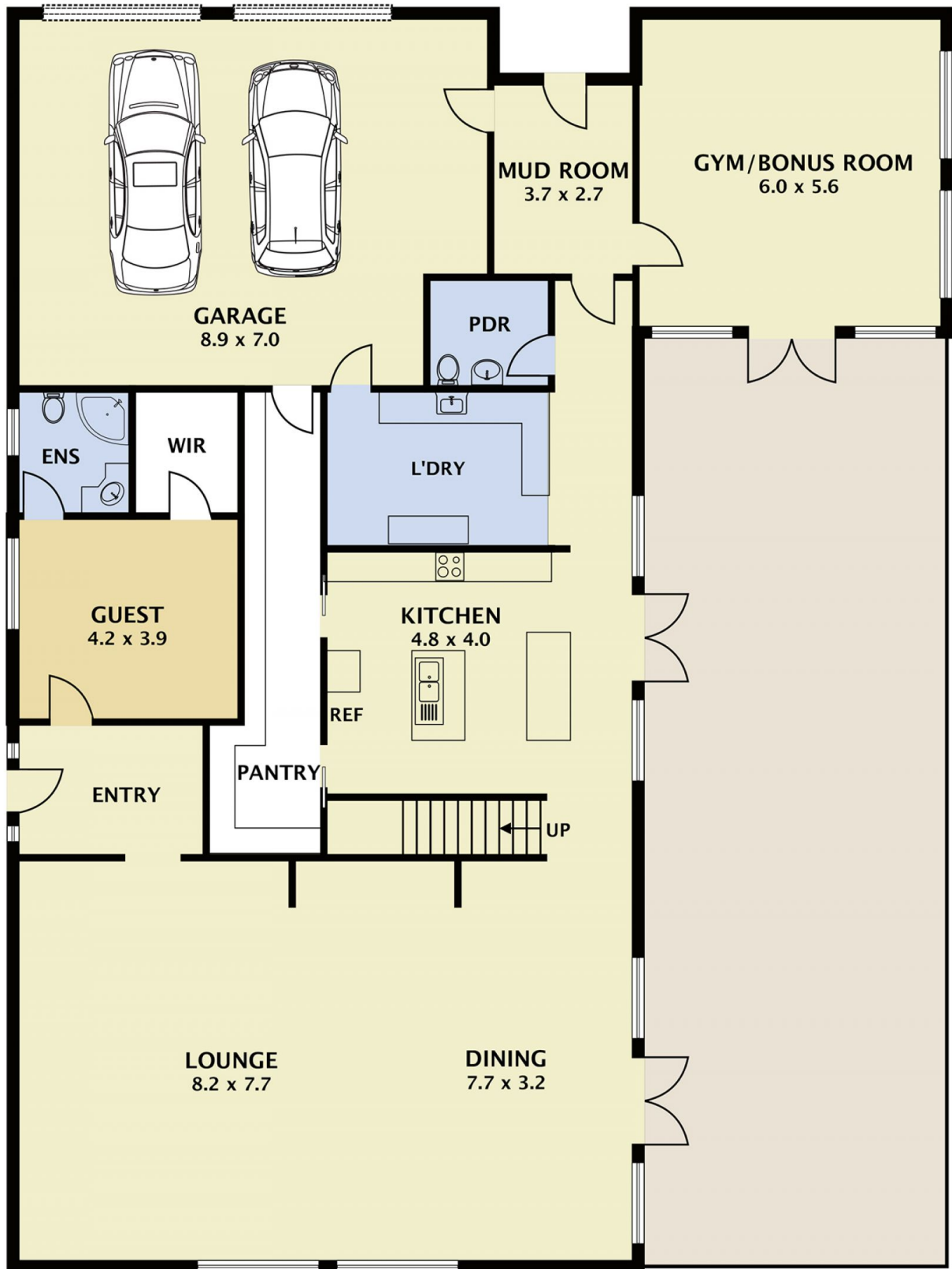


FIRST FLOOR

142 WHEELWRIGHTS ROAD RIDDELLS CREEK

DISCLAIMER

PLANS SHOWN ARE FOR MARKETING PURPOSES ONLY. ALL DIMENSIONS ARE APPROXIMATE AND NOT TO SCALE. THEY ARE SUBJECT TO ERRORS AND INACCURACIES AND NO LIABILITY WILL BE ACCEPTED. INTERESTED PARTIES SHOULD MAKE THEIR OWN INQUIRIES.



GROUND FLOOR

142 WHEELWRIGHTS ROAD RIDDELLS CREEK

DISCLAIMER

PLANS SHOWN ARE FOR MARKETING PURPOSES ONLY, ALL DIMENSIONS ARE APPROXIMATE AND NOT TO SCALE. THEY ARE SUBJECT TO ERRORS AND INACCURACIES AND NO LIABILITY WILL BE ACCEPTED. INTERESTED PARTIES SHOULD MAKE THEIR OWN INQUIRIES.