



20 Cheriton Drive Riddells Creek VIC

4 2 6

Whether you are looking for a tree-change or just want more space for the kids to run around this truly delightful 4 bedroomed family home is on a glorious 2000m2 block. Complimented by a separate driveway which leads to a large shed with concrete base & power. Ideal for all those additional vehicles or even convert the shed and work from home!

WHAT WE LOVE ABOUT THIS PROPERTY:

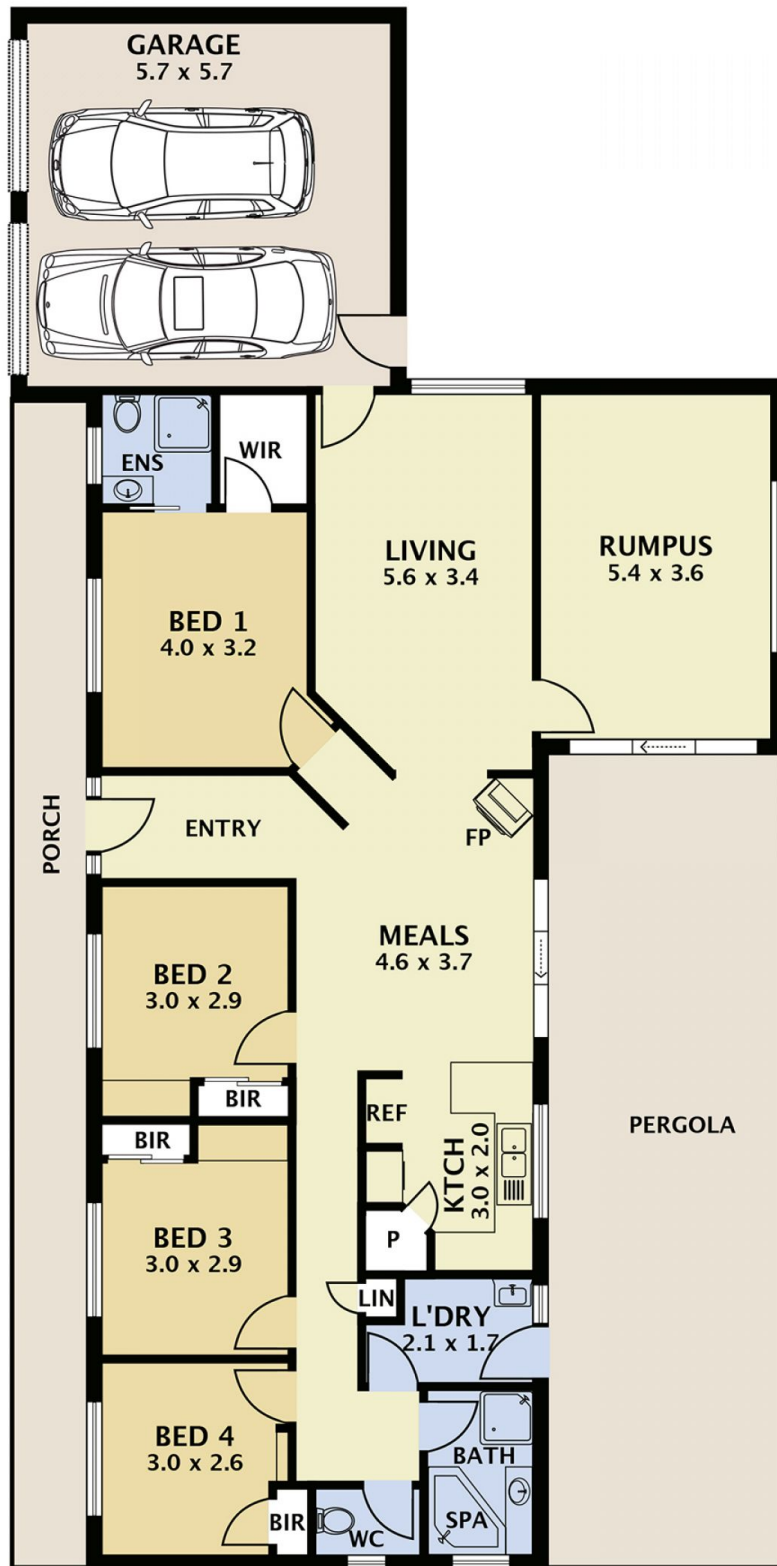
- FOUR Bedrooms with wardrobes
- The master bedroom has an ensuite & walk in robe
- A welcoming entry leads into the main hub of the home
- The kitchen meals overlooks the spacious garden so you can keep an eye on the kids!
- Separate spacious living area

Land Size : 2000 sqm

View : <https://www.davidpinorealestate.com.au/sale/vic/macedon-ranges/riddells-creek/residential/house/6598890>



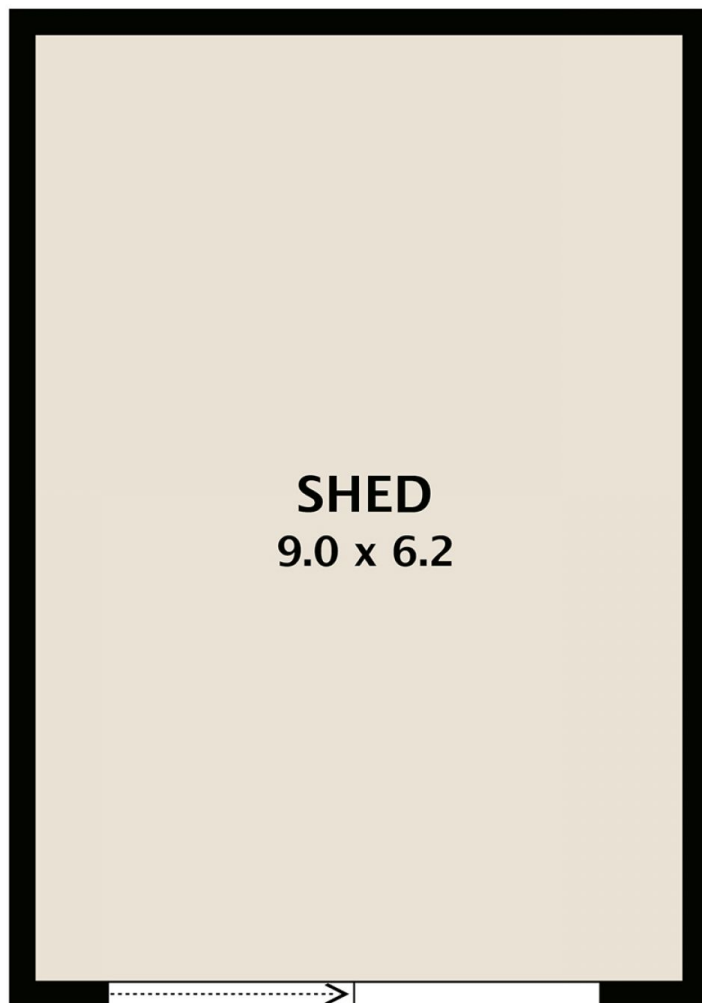
David Pino
0344101799



20 Cheriton Drive Riddells Creek

DISCLAIMER

PLANS SHOWN ARE FOR MARKETING PURPOSES ONLY, ALL DIMENSIONS ARE APPROXIMATE AND NOT TO SCALE. THEY ARE SUBJECT TO ERRORS AND INACCURACIES AND NO LIABILITY WILL BE ACCEPTED. INTERESTED PARTIES SHOULD MAKE THEIR OWN INQUIRIES.



20 Cheriton Drive Riddells Creek

DISCLAIMER

PLANS SHOWN ARE FOR MARKETING PURPOSES ONLY. ALL DIMENSIONS ARE APPROXIMATE AND NOT TO SCALE. THEY ARE SUBJECT TO ERRORS AND INACCURACIES AND NO LIABILITY WILL BE ACCEPTED. INTERESTED PARTIES SHOULD MAKE THEIR OWN INQUIRIES.