



1 Ormerod Court Gisborne VIC

4 2 4

Set within the exclusive picturesque regional town of Gisborne at the foot of the Macedon Ranges and only 50 minutes to the Melbourne CBD. This spectacular solid, double-brick home is set on one acre in a quiet court and is the perfect place to raise a young family, or for a couple downsizing who love gardening and entertaining. ??

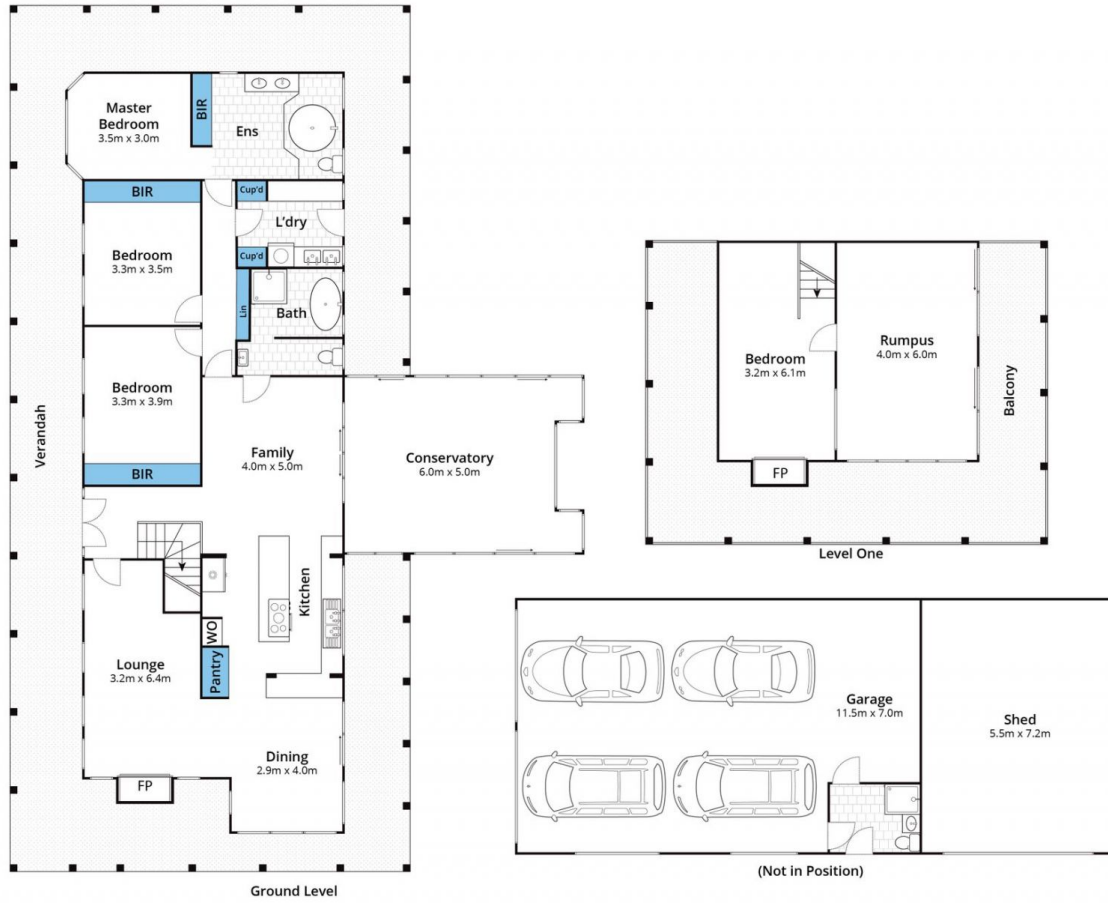
This home boasts fantastically proportioned living areas both indoors and outdoors. The top floor is complete with a large 180-degree private balcony surrounded by gum trees and native garden views with many species of visiting native birds. Perfect for an entertainer, the upstairs area also offers additional space with a pool room/man cave, guest room, open fireplace and relaxing lounge area.

?The warm, cosy kitchen gives you this sense of an English farmhouse with exposed beams, timber benchtops

Price : \$ 1,420,000
Land Size : 4047 sqm
View : <https://www.davidpinorealestate.com.au/sale/vic/macedon-ranges/gisborne/residential/house/6692764>



David Pino
0344101799



Whilst bwrn.com.au has made every attempt to ensure the accuracy of the floor plan contained here, measurements are approximate and no responsibility is taken for any error, omission, or mis-statement. This plan is for illustrative purposes only.

1 Ormerod Court, Gisborne