



57 Margaret Street Moonee Ponds VIC

4 🚗 2 🚗 3 🚗

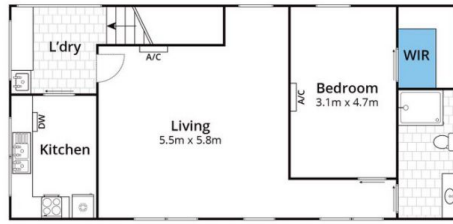
The team at David Pino Real Estate are proud to present this unique opportunity to purchase a double entrance home in a highly sought-after pocket of Moonee Ponds. This allotment boasts 468.23m². A short stroll to the station, Queens Park and to all amenities.

Land Size : 468.23 sqm
View : <https://www.davidpinorealestate.com.au/sale/vic/north/moonee-ponds/residential/house/6735872>

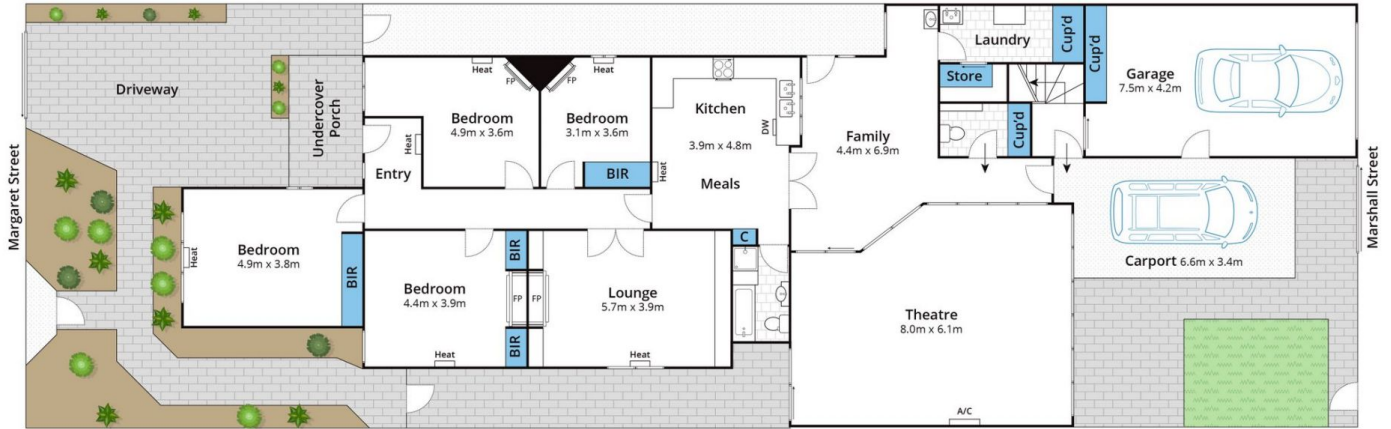
A renovated, brick Edwardian family home, combines stunning period features, landscaped low maintenance gardens, two street frontages, two dwellings and a prime location. Comprising of state-of-the-art Miele kitchen appliances, meals, lounge, three bedrooms (BIRs), study/4th bedroom, bathroom, hardwood floors, timber shutters, hydronic heating, alarmed security system, built in bookcases, zoned refrigerated air conditioning and heating, instant hot water systems, three phase power, plenty of storage, large entertainment room with theatre system, electric blinds and double glazed windows, security



David Pino
0344101799



Upper Level/
Self Contained Apartment



Lower Level



Approx House Area 316m²
Approx Land Area 468m²

Whilst bwr.com.au has made every attempt to ensure the accuracy of the floor plan contained here, measurements are approximate and no responsibility is taken for any error, omission, or mis-statement. This plan is for illustrative purposes only.

57 Margaret Street, Moonee Ponds