



22 Poplar Drive Romsey VIC

4 2 2

Set within the exclusive Autumn Views Estate in the picturesque regional town of Romsey, only 50 minutes to the Melbourne CBD. This spectacular barely lived in Metricon built Hamptons-inspired residence on 902m² will accommodate your growing family for years to come.

Fantastically proportioned open living and modern quality seamlessly integrate flexible indoor spaces with outdoor enjoyment. Light filled luxury from your first step inside.

With stone bench tops to the perfectly positioned kitchen hosts an impressive 900mm stainless steel upright stove, dishwasher, oversized island bench, extensive storage as well as a massive walk-in pantry.

This remarkable residence accommodates four-bedrooms. Hotel style master suite offers his and hers walk in robes,

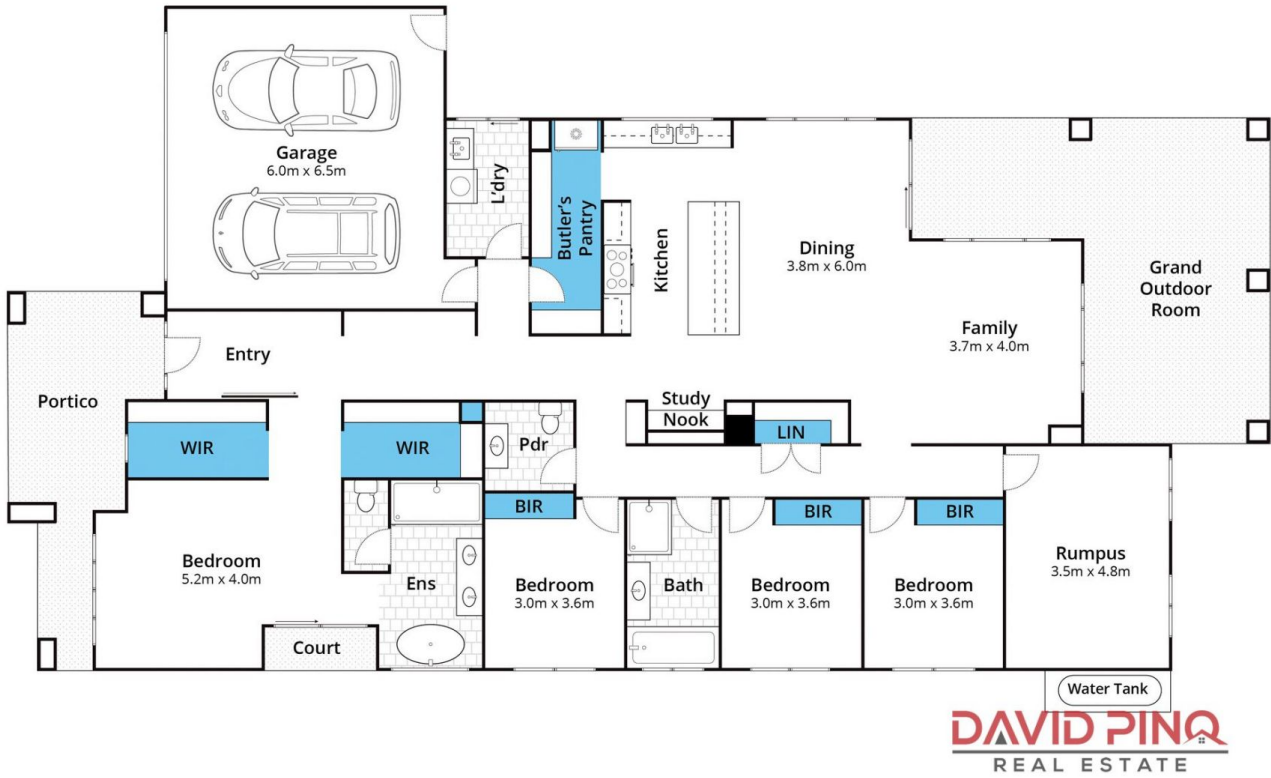
Price : \$ 917,500
Building Size : 30 sqm
Land Size : 902 sqm
View : <https://www.davidpinorealestate.com.au/sale/vic/greater-bendigo-region/romsey/residential/house/7163460>



David Pino
0344101799



Rebecca Pino
0344101799



Approx House Area 272m²

Whilst bwrn.com.au has made every attempt to ensure the accuracy of the floor plan contained here, measurements are approximate and no responsibility is taken for any error, omission, or mis-statement. This plan is for illustrative purposes only.

22 Poplar Drive, Romsey